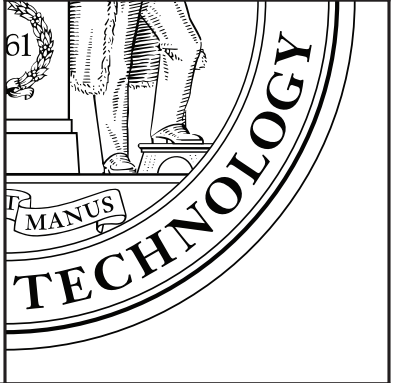
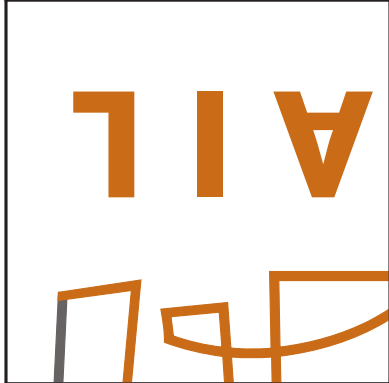
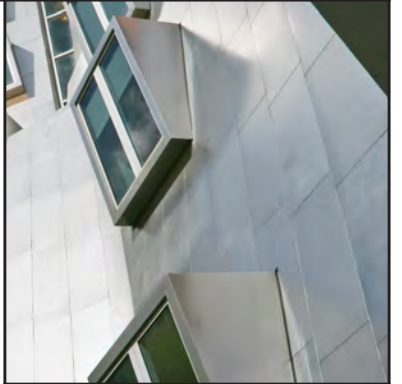
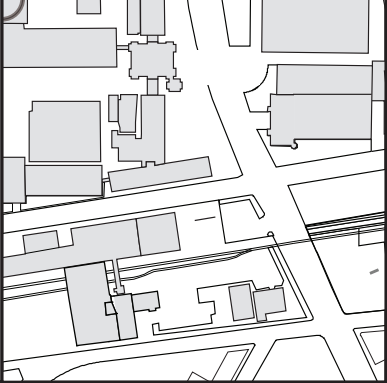


Additional rules: No cutting. A correctly folded solution has one of the 2 x 2 images on one side; the other side is arbitrary. The puzzle images are the MIT Endicott House (where the meeting took place), these instructions, the CSAIL logo, the MIT seal, the MIT campus map, and the Stata Center.



*designed by*  
 Erik Demaine &  
 Martin Demaine  
*based on a puzzle by*  
 Tobiuo-Orange  
*photo of Stata Center by*  
 Jason Dorfman

